

GoldenEar Technology Speakers: Coming In October!

In 1972 three college friends started a speaker company out of a garage in Baltimore. This speaker company literally turned the hi-fi biz on its ear, setting new standards of performance for reasonable money. Polk Audio revealed the big names of the day (Advent, EPI, Infinity, JBL) to be over priced and under performing. I proudly sold Polk for many years before it went public in the late 80s. Sandy Gross and his two buddies went their separate ways. Sandy's presence has been sorely missed at Polk.

In 1990 Sandy started Definitive Technology. Definitive (1990 was still PRE DVD, as you'll recall) was based largely on the concept that bi-polar speakers would make surround sound much more fun to listen to. The analog (remember- this was pre digital and before we had discrete 5.1 channels) steering of the day wasn't very good and bi-polar spiced it up. Sandy literally invented the product category of towers with built in powered subs. Definitive had a nice run and Sandy decided to sell when the offer was *too good to refuse* in the mid 2000s.

The short version of the long story is, Sandy has missed the fun of being in the business. He has started a new company called GoldenEar Technology. His speakers offer a number of new twists and turns that he, and WE, are confident, will make GoldenEar Technology the hottest new speaker line since 1990.

High Frequency Drivers: Remember the Heil Tweeter?!

GoldenEar speakers will all use HVFR (High Velocity Folded Ribbon) tweeters! The tweeter itself is a high temperature film diaphragm which is folded like an accordion and positioned within an intense neodymium magnetic field. The HVFR develops high pressure and squeezes the air out between the pleats of the diaphragm. Those of us that have been around a while feel more than a little tingle when we recognize that this is a close cousin of the renowned Heil driver!

Mid-Bass Drivers

GoldenEar speakers will use its 4.5" cast basket drivers with unique MVPP (Multi-Variied Phase Plug) design in D'Appolito configuration. These drivers exceed 20k. While they are crossed over to the HVFRs at 3.5kHz, the high extension linearity is a tremendous advantage in providing seamless blending.

Quadratic Sub Bass Drivers

Model Triton Two uses two, ACTIVE, 5x9" Glass Fiber Sub Bass Drivers. These long throw drivers provide exceptionally strong bass from relatively modest sized towers. EACH of these drivers is driven by ITS OWN on board 1200w amp! Having such powerful amps dedicated to this task is vital for achieving high performance.

Quadratic Planar Infrasonic Radiators

GoldenEar will use passive infrasonic (low frequency) radiators. The Radiators control bass more ideally than a standard port. Radiators will be in varying sizes depending on the model it is used in.

Models:

Triton Two Towers \$1250 each: 48h, 7.5w, 15d

One HVFR Ribbon Tweeter, Two 4.5" Mid-Bass Drivers, Two 5x9" Quadratic Powered Woofers (1200w), Two 7x10" Quadratic Planar Infrasonic Radiators



Triton Two Towers



Triton Two

SuperSat 50C center \$500 each: 4.75h, 27w, 2.5d

One HVFR Ribbon Tweeter, Two 4.5" Mid-Bass Drivers, Two 4x7" Quadratic Planar Radiators



SuperSat 50c



SuperSat 50c

SuperSat 50 \$500 each: 27h, 4.75w, 2.5d

On Wall, On Shelf, Front Main, Surrounds

One HVFR Ribbon Tweeter, Two 4.5" Mid-Bass Drivers, Two 4x7" Quadratic Planar Radiators



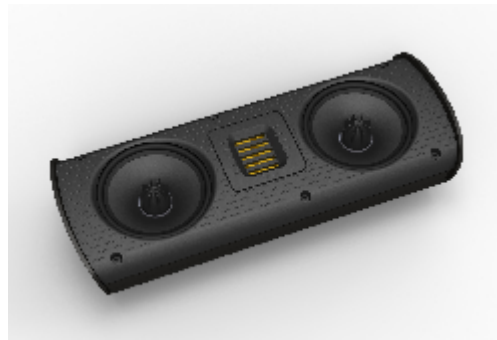
SuperSat 50

SuperSat 3C center \$250 each: 4.75h, 12w, 2.7d

One HVFR Ribbon Tweeter, Two 4.5" Mid-Bass Drivers



SuperSat 3C



SuperSat 3C

SuperSat 3 \$250 each: 12h, 4.75w, 2.7d
On Wall, On Shelf, Front Main, Surrounds
One HVFR Ribbon Tweeter, Two 4.5" Mid-Bass Drivers



SuperSat 3

ForceField 4 Subwoofer \$700ea: 12.75h, 13 3/8w, 17 7/8d, 1200w amp
One 10" High Output Bass Driver, One 11x13" Quadratic Planar Infrasonic Radiator
Optional Wireless Interface \$130 Due in Jan 2011

ForceField 3 Subwoofer \$500: 11h, 11.5w, 15.75d, 1000w amp
One 8" High Output Bass Driver, One 9x11" Quadratic Planar Infrasonic Radiator
Optional Wireless interface \$130 Due in Jan 2011



ForceField 3 & ForceField 4 Subwoofers